

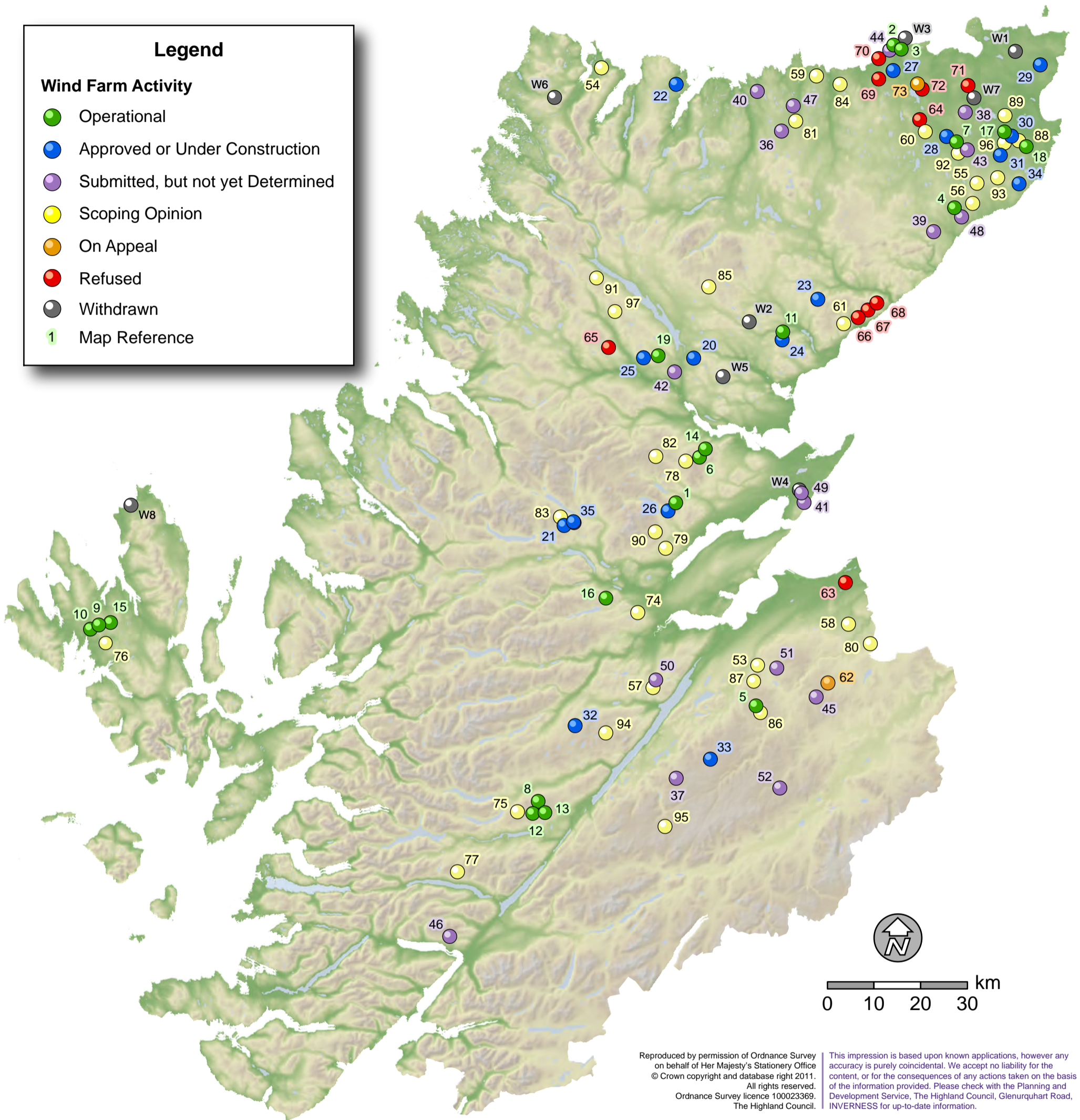
Highland Wind Farm Activity – May 2011

Aithisg Tuath Gaoithe – A' Mhàigh 2011

Legend

Wind Farm Activity

- Operational
- Approved or Under Construction
- Submitted, but not yet Determined
- Scoping Opinion
- On Appeal
- Refused
- Withdrawn
- 1 Map Reference



Wind Farm News

The Druim Bà Wind Farm Application for 23 turbines with maximum blade height tips of 149.5m was submitted. RWE npower Renewables submitted their application to the Scottish Ministers for a site at Allt Duine, north of Kincaig. The 93MW proposal of 31 turbines with blade tip heights of up to 125m did not get support from the nearby Cairngorms National Park Authority. Glenkirk was recalled, due to objections by CNPA, to be considered along with Tom nan Clach. Carbon Free eventually applied for 20 turbines with blade tip heights of around 126m near Moy. Scotrenewables have sought a Review of the Refusal of their second Hill of Lieurary application. SSE Renewables have requested Scoping Opinions for large projects, either side of Loch Ness, one at Balmacaan and the other at Stronelaig. Over 100 turbines of 135m tip height are being suggested for each site. SSE Renewables are Scoping at Glencassley, again a major project.



Please contact us with up-dates or send in photographs that we could publish



Highland Wind Farm Activity - May 2011

Aithisg Tuath Gaoithe - A' Mhàigh 2011



REF	LOCATION	DEVELOPER	No. of TURBINES	MW CAPACITY	STATUS
1	Novar, Evanton, CSER	RWE npower Renewables	34	17	Operational
2	Forss, by Thurso, CSER	Renewable Energy Systems (RES)	2	2	
3	Forss Phase II, CSER	Renewable Energy Systems (RES)	4	5	
4	Buolfruich, Houstry, Dunbeath, CSER	Anthony Hall	15	12.75	
5	Farr, Tomatin, INBS	RWE npower Renewables	40	92	
6	Beinn Tharsuinn, S of Dornoch Firth, CSER	Scottish Power (SP)	17	29.75	
7	Causeymire, CSER	RWE npower Renewables	21	48	
8	Millennium, South of Glen Moriston, INBS	Renewable Development Co (RDC)	16	40	
9	Ben Aketil, Dunvegan, RSL	Renewable Development Co (RDC)	10	23	
10	Ben Aketil Extension, RSL	Renewable Development Co (RDC)	2	4.6	
11	Kilbraur, Strath Brora, CSER	Renewable Development Co (RDC)	19	47.5	
12	Millennium Extension (A), INBS	Millennium Wind Energy Ltd	4	10	
13	Millennium Extension (B), INBS	Millennium Wind Energy Ltd	6	15	
14	Beinn nan Oighrean, CSER	RockBySea and Midfearn Renewables Ltd	2	4.6	
15	Edinbane, RSL	Vattenfall	18	31.5	
16	Fairburn, Marybank, RSL	Scottish & Southern Energy (SSE)	20	35	
17	Flex Hill, Bilbster, CSER	Donald Miller	3	3.9	
18	Achairn, Wick, CSER	James and Ronald Innes	3	6	
19	Achany, Lairg, CSER	Scottish & Southern Energy (SSE)	19	38	
20	Lairg, SU	Lairg Windfarm Ltd	3	6.9	
21	Lochluichart, Garve, RC	LZN Ltd	17	51	Approved or Under Construction
22	Melness, SU	Melness Crofters Estate Ltd	3	2.55	
23	Gordonbush, Brora, SU	Scottish & Southern Energy (SSE)	35	71.75	
24	Kilbraur Extension, Strath Brora, SU	West Coast Energy	8	20	
25	Rosehall, SU	E.ON UK Renewables Ltd	19	24.7	
26	Novar Extension, RC	RWE npower Renewables	16	36.8	
27	Baillie Hill, Westfield, CA	Baillie Wind Farm Ltd	21	52.5	
28	Causeymire Extension, CA	RWE npower Renewables	3	7	
29	Stroupster, Nybster, CA	RWE npower Renewables	12	36	
30	Wathegar, CSER	Danny Miller (Whirlwind Renewables)	5	10	
31	Camster, CSER	E.ON UK Renewables Ltd	25	50	
32	Glenurquhart & Strathglass Wind Energy Project, INBS	Corrimony Energy Ltd and Soirbheas Ltd	5	10	
33	Dunmaglass, Strathnairn, INBS	Renewable Energy Systems (RES)	33	99	
34	Burn of Whilk, East Clyth, CSER	RWE npower Renewables	9	27	
35	Corriemoillie, Garve, RSL	E.ON UK Renewables Ltd	19	47.5	
36	Strathy South, Strathy, SU	Scottish & Southern Energy (SSE)	77	177	Submitted, but not yet Determined
37	Corriegarth, Gorthleck, IN	North British Windpower	20	49	
38	Spittal Hill, Spittal, CA	Spittal Hill Wind Farm Ltd	30	77.5	
39	Dunbeath, CA	West Coast Energy	22	66	
40	Bettyhill, SU	North British Windpower	2	5	
41	Nigg, RC	Falck Renewables Ltd	5	10	
42	Braemore, Lairg, CSER	Braemore Wind Ltd	27	81	
43	Halsary, CA	Scottish Power	18	41.4	
44	Forss Wind Farm Extension (Phase III), CSER	Renewable Energy Systems (RES)	5	6.5	
45	Glenkirk, Tomatin, INBS	Eurus Energy UK Ltd	26	78	
46	Druim Fada, Locheil, LO	North British Windpower	4	10	
47	Strathy North, Strathy, SU	Scottish & Southern Energy (SSE)	33	76	
48	Upper Smerral Wind Cluster, CSER	Caithness Power	4	3.2	
49	Cullisse, Nigg, CSER	K Mackenzie	1	0.3	
50	Druim Ba, Drumadrochit, INBS	Druim Ba Sustainable Energy	23	69	
51	Moy Wind Farm, INBS	Carbon Free Developments	20	41	
52	Allt Duine, INBS	RWE npower Renewables	31	93	
53	Craggie, Daviot, IN	West Coast Energy	3	7.5	
54	Durness, SU	Durness Development Group Ltd	2	0.33	
55	Rumster, CA	Rumster Community Wind Energy Project	3	9	
56	Nottingham Mains, CA	Ian Sinclair	2	4.6	
57	Abriachan, IN	Abriachan Forest Trust	1	1.5	
58	Achgour, Ardclach, NA	Wind Hydrogen Ltd	5	6.5	
59	Melvich, SU	Fountain Forestry	6	10	
60	Westerdale, CA	Scottish Power	50-60	135	
61	Crackaig, SU	Wind Hydrogen Ltd	7	14	
74	Auchmore, Muir of Ord, IN	North British Windpower	5-7	12-21	
75	Beinneun, Invergarry, INBS & RSL	Ridgewind	38	50+	
76	Glen Ullinish, SL	Community Wind Farm Alliance	21	49	
77	Arkaig, LO	North British Windpower	91	118	
78	Coire na Cloiche, Strath Rusdale, SU	RockbySea	13	29.9	
79	Drynie, Dingwall, RC	RockbySea	2	4.6	
80	Cairn Duhie, Ferness, NA	RES	24	32	
81	Strathy Forest, SU	Chester J Kelly	21	54	
82	Glenmorrie, Bonar Bridge, CSER	Wind Energy (Glenmorrie)	40	120	
83	Lochluichart Extension, Garve, RSL	LZN Ltd	13	29.9	
84	Ackran, Melvich, SU	SSE Renewables	15	30	
85	Dalnessie, Lairg, CSER	SSE Renewables		50+	

continued

REF	LOCATION	DEVELOPER	No. of TURBINES	MW CAPACITY	STATUS
86	Kyllachy, Tomatin, INBS	RWE npower Renewables	19	38–57	Scoping Opinion
87	Daviot, INBS	West Coast Energy	10	33	
88	Wathegar Phase II, CSER	Whirlwind Renewables	6–9	12–27	
89	Cogle Moss Wind Cluster, Bilbster, CSER	Muirden Energy	7	16	
90	Clach Liath Wind Farm, Evanton, CSER & RSL	Falck Renewables Plc / Coriolis Energy		<50	
91	Sallachy Wind Farm, Lairg, CSER	WKN Windkraft Nord AG (WKN)	up to 30	90	
92	Bad á Cheò, Mybster, CSER	RWE npower Renewables	up to 20	up to 50	
93	Camster Forest, CSER	Simon Hutchen	16–20		
94	Balmacaan , Invermoriston, INBS	SSE Renewables	up to 138	50+	
95	Stronelairg, Fort Augustus, INBS	SSE Renewables		50+	
96	West of Flex Hill, Flex, Watten, CSER	Environsol	3	6–9	
97	Glencassley, Lairg, CSER	SSE Renewables		150+	
62	Tom nan Clach, Tomatin, INBS	Infinergy	17	39.1	
73	Hill of Lieurary II, Westfield, CSER	Scotrenewables plc	2	4	Refused
63	Broombank, Auldearn, INBS	J Scott	-1	-1	
64	Olgrinmore, CSER	L Aitkenhead	-2	-5	
65	Invercassley, Lairg, CSER	Airtricity Devts UK Ltd	25	-50	
66	West Garty, Helmsdale, CSER	Micon UK Ltd	-16	-12	
67	Gartymore, Helmsdale, CSER	RES	-14	-11	
68	Crakaig, Loth, Helmsdale, CSER	Border Wind Ltd	-8	-5	
69	South Shebster, CSER	Mr & Mrs C W Sutherland	0	-10	
70	Borrowston, Dounreay, CSER	Scottish Power	-10	-17	
71	Durran Mains, Durran, CSER	SSE Renewables	-13	-19.5	
72	Hill of Lieurary, Westfield, CSER	Scotrenewables plc	-3	-8	
W1	Scoolary, CA	British Energy	48	120	Withdrawn
W2	Strath Brora (West), SU	RDC	23	46	
W3	Forss Extension (W), CA	Fivestone Ltd	2	2	
W4	Cullisse, RC	Wind Prospect Ltd	6	5	
W5	Cambusmore, SU	Renewable Energy Systems (RES)	33	49.5	
W6	Farmheall Hill, Durness, SU	Mr Elliot	3	6	
W7	Bower Quarry, CA	J Gunn	1	1	
W8	South of Kilmuir toilets	Mr H MacDonald	1	0.9	

Errors and Omissions Excepted